



Test Report

Report No.: ULAB-E1-E24080062

Date Of Issue: September 30, 2024

Page:1/15

Applicant: Chengdu Leiqu Information Technology Co., Ltd.

Address: No.1102,11th Floor,Building 1,No.69 Tianfu 3rd Street, Chengdu High-tech Zone,
China (Sichuan) Pilot Free-Trade Zone

The following merchandise were submitted and identified by the clients as:

Sample Name: 4G CPE 3i

Model No.: B313-322

Date Of Submission: August 21, 2024

Testing Period: From August 21, 2024 to September 11, 2024

SUMMARY OF TEST RESULTS	
TEST REQUESTED	CONCLUSION
Heavy Metals, Flame Retardants and Phthalates Content -European Parliament and Council Directive 2011/65/EU on the Restriction of the Use of Certain Hazardous Substances in Electrical and Electronic Equipment (RoHS) with its Amendment Directive 2015/863/EU	PASS

Test Result(s): Please refer to next page(s).

Signed for and on behalf of ULAB TESTING CO., LTD.

Approved by:



ULAB TESTING CO.,LTD.

Address: 3/F., Building A, No.3, Jinshagang 1st Road, Shixia, Dalang, Dongguan, Guangdong, China
Testing Location: Room 701, Building A3, No.9, Jinshagang 1st Road, Shixia, Dalang, Dongguan, Guangdong, China
Website:www.ulabdg.com Tel:0769-22210225

This report is governed by, and incorporates by reference, the General Terms and Conditions of Testing which could be obtained / consulted by request to ULAB or via the webpage of Conditions of Testing in the official website: www.ulabdg.com. Attention is drawn to the limitation of liability, indemnification and jurisdiction issues defined therein. This report sets forth our findings solely respect to the client's request(s) and the test results are obtained just with the submitted sample identified herein. The test results set forth in this report are not indicative or representative of the quality or characteristics of the lot from which a test sample was taken or any similar or identical product unless specifically and expressly noted. This report shall not be partly reproduced without written approval of the laboratory. Any unauthorized alteration, forgery or falsification of the content or appearance of this report is unlawful, and any offenders may be prosecuted to the fullest extent of the law

Test Report

Report No.: ULAB-E1-E24080062

Date Of Issue: September 30, 2024

Page:2/15

Test Item(s)	Component Description(s)	Style(s)
1	White adhesive soft plastic with black printing	-
2	White plastic	-
3	White plastic with black printing	-
4	White plastic	-
5	Silvery metal with black plating	-
6	Silvery metal with black plating	-
7	Black plastic	-
8	Silvery metal	-
9	Silvery metal	-
10	Black plastic	-
11	Silvery metal	-
12	Red glue	-
13	Black plastic	-
14	Silvery metal	-
15	Black plastic	-
16	Silvery metal	-
17	Silvery metal	-
18	Black soft plastic with gray printing	-
19	Silvery metal	-
20	Black soft plastic	-
21	Silvery metal	-
22	Natural paper with electrolyte	-
23	Silvery gray metal	-
24	Gun metal	-
25	Gray plastic	-
26	Silvery metal	-
27	Silvery metal	-
28	Black plastic	-
29	Silvery metal	-
30	Silvery metal	-
31	Black plastic	-
32	Silvery metal	-
33	Silvery metal with black printing	-

ULAB TESTING CO.,LTD.

Address: 3/F., Building A, No.3, Jinshagang 1st Road, Shixia, Dalang, Dongguan, Guangdong, China
 Testing Location: Room 701, Building A3, No.9, Jinshagang 1st Road, Shixia, Dalang, Dongguan, Guangdong, China
 Website: www.ulabdg.com Tel: 0769-22210225

This report is governed by, and incorporates by reference, the General Terms and Conditions of Testing which could be obtained / consulted by request to ULAB or via the webpage of Conditions of Testing in the official website: www.ulabdg.com. Attention is drawn to the limitation of liability, indemnification and jurisdiction issues defined therein. This report sets forth our findings solely respect to the client's request(s) and the test results are obtained just with the submitted sample identified herein. The test results set forth in this report are not indicative or representative of the quality or characteristics of the lot from which a test sample was taken or any similar or identical product unless specifically and expressly noted. This report shall not be partly reproduced without written approval of the laboratory. Any unauthorized alteration, forgery or falsification of the content or appearance of this report is unlawful, and any offenders may be prosecuted to the fullest extent of the law.

Test Report

Report No.: ULAB-E1-E24080062

Date Of Issue: September 30, 2024

Page:3/15

Test Item(s)	Component Description(s)	Style(s)
34	Black plastic	-
35	Black soft plastic	-
36	Silvery metal	-
37	Natural paper with electrolyte	-
38	Silvery gray metal	-
39	Silvery gray metal	-
40	Golden metal	-
41	White soft plastic	-
42	Golden metal	-
43	White adhesive soft plastic with black printing	-
44	White adhesive soft plastic with black printing	-
45	White paper with adhesive	-
46	Silvery metal	-
47	Black plastic	-
48	Golden plating metal	-
49	Silvery metal	-
50	White adhesive soft plastic with black printing	-
51	Silvery metal	-
52	Copper metal	-
53	Blue silica	-
54	Yellow LED	-
55	White LED	-
56	Black body	-
57	Silvery metal	-
58	Black body	-
59	Black/white body	-
60	Black magnet	-
61	Copper metal	-
62	Silvery body	-
63	Black body	-
64	Black body	-
65	Black body	-
66	Gun body	-
67	Beige body	-

ULAB TESTING CO.,LTD.

Address: 3/F., Building A, No.3, Jinshagang 1st Road, Shixia, Dalang, Dongguan, Guangdong, China
 Testing Location: Room 701, Building A3, No.9, Jinshagang 1st Road, Shixia, Dalang, Dongguan, Guangdong, China
 Website: www.ulabdg.com Tel: 0769-22210225

This report is governed by, and incorporates by reference, the General Terms and Conditions of Testing which could be obtained / consulted by request to ULAB or via the webpage of Conditions of Testing in the official website: www.ulabdg.com. Attention is drawn to the limitation of liability, indemnification and jurisdiction issues defined therein. This report sets forth our findings solely respect to the client's request(s) and the test results are obtained just with the submitted sample identified herein. The test results set forth in this report are not indicative or representative of the quality or characteristics of the lot from which a test sample was taken or any similar or identical product unless specifically and expressly noted. This report shall not be partly reproduced without written approval of the laboratory. Any unauthorized alteration, forgery or falsification of the content or appearance of this report is unlawful, and any offenders may be prosecuted to the fullest extent of the law.

Test Report

Report No.: ULAB-E1-E24080062

Date Of Issue: September 30, 2024

Page:4/15

<u>Test Item(s)</u>	<u>Component Description(s)</u>	<u>Style(s)</u>
68	Black body	-
69	Green PCB	-
70	Silvery solder	-
71	Green PCB	-
72	White soft plastic	-
73	White plastic	-
74	Blue soft plastic	-
75	Silvery metal	-
76	White plastic	-
77	Silvery metal	-
78	Silvery metal	-
79	White plastic	-
80	White plastic	-
81	White plastic	-
82	Brown soft plastic	-
83	Silvery metal	-
84	Transparent soft plastic	-
85	Silvery metal	-
86	Silvery solder	-
87	Black sponge with adhesive	-
88	Green PCB	-

ULAB TESTING CO.,LTD.

Address: 3/F., Building A, No.3, Jinshagang 1st Road, Shixia, Dalang, Dongguan, Guangdong, China
Testing Location: Room 701, Building A3, No.9, Jinshagang 1st Road, Shixia, Dalang, Dongguan, Guangdong, China
Website: www.ulabdg.com Tel: 0769-22210225

This report is governed by, and incorporates by reference, the General Terms and Conditions of Testing which could be obtained / consulted by request to ULAB or via the webpage of Conditions of Testing in the official website: www.ulabdg.com. Attention is drawn to the limitation of liability, indemnification and jurisdiction issues defined therein. This report sets forth our findings solely respect to the client's request(s) and the test results are obtained just with the submitted sample identified herein. The test results set forth in this report are not indicative or representative of the quality or characteristics of the lot from which a test sample was taken or any similar or identical product unless specifically and expressly noted. This report shall not be partly reproduced without written approval of the laboratory. Any unauthorized alteration, forgery or falsification of the content or appearance of this report is unlawful, and any offenders may be prosecuted to the fullest extent of the law.

Test Report

Report No.: ULAB-E1-E24080062

Date Of Issue: September 30, 2024

Page:5/15

Test Result(s)

Heavy Metals, Flame Retardants Content - European Council Directive 2011/65/EU on the Restriction of the Use of Certain Hazardous Substances in Electrical and Electronic Equipment (RoHS) with its Amendments Commission Delegated Directive (EU) 2015/863

Test Method : IEC62321-3-1:2013, IEC62321-5:2013, IEC62321-6:2015, IEC62321-7-1:2015, analyzed by EDXRF & ICP-OES & AAS & GC-MS & UV-Vis.

Parameter	Result(mg/kg)						Conclusion
	Lead (Pb)	Cadmium (Cd)	Mercury (Hg)	Chromium VI (Cr VI)	PBBs	PBDEs	
Test Item(s)	-	-	-	-	-	-	-
1.	BL	BL	BL	BL	BL	BL	PASS
2.	BL	BL	BL	BL	BL	BL	PASS
3.	BL	BL	BL	BL	BL	BL	PASS
4.	BL	BL	BL	BL	BL	BL	PASS
5.	BL	BL	BL	Negative	NA	NA	PASS
6.	BL	BL	BL	Negative	NA	NA	PASS
7.	BL	BL	BL	BL	BL	BL	PASS
8.	BL	BL	BL	BL	NA	NA	PASS
9.	BL	BL	BL	BL	NA	NA	PASS
10.	BL	BL	BL	BL	BL	BL	PASS
11.	BL	BL	BL	BL	NA	NA	PASS
12.	BL	BL	BL	BL	BL	BL	PASS
13.	BL	BL	BL	BL	BL	BL	PASS
14.	BL	BL	BL	BL	NA	NA	PASS
15.	BL	BL	BL	BL	ND	ND	PASS
16.	BL	BL	BL	BL	NA	NA	PASS
17.	BL	BL	BL	BL	NA	NA	PASS
18.	BL	BL	BL	BL	BL	BL	PASS
19.	BL	BL	BL	BL	NA	NA	PASS
20.	BL	BL	BL	BL	BL	BL	PASS
21.	BL	BL	BL	BL	NA	NA	PASS
22.	BL	BL	BL	BL	BL	BL	PASS
23.	BL	BL	BL	BL	NA	NA	PASS
24.	BL	BL	BL	BL	NA	NA	PASS
25.	BL	BL	BL	BL	BL	BL	PASS
26.	BL	BL	BL	BL	NA	NA	PASS

ULAB TESTING CO.,LTD.

Address: 3/F., Building A, No.3, Jinshagang 1st Road, Shixia, Dalang, Dongguan, Guangdong, China
 Testing Location: Room 701, Building A3, No.9, Jinshagang 1st Road, Shixia, Dalang, Dongguan, Guangdong, China
 Website: www.ulabdg.com Tel: 0769-22210225

This report is governed by, and incorporates by reference, the General Terms and Conditions of Testing which could be obtained / consulted by request to ULAB or via the webpage of Conditions of Testing in the official website: www.ulabdg.com. Attention is drawn to the limitation of liability, indemnification and jurisdiction issues defined therein. This report sets forth our findings solely respect to the client's request(s) and the test results are obtained just with the submitted sample identified herein. The test results set forth in this report are not indicative or representative of the quality or characteristics of the lot from which a test sample was taken or any similar or identical product unless specifically and expressly noted. This report shall not be partly reproduced without written approval of the laboratory. Any unauthorized alteration, forgery or falsification of the content or appearance of this report is unlawful, and any offenders may be prosecuted to the fullest extent of the law.

Test Report

Report No.: ULAB-E1-E24080062

Date Of Issue: September 30, 2024

Page:6/15

Parameter	Result(mg/kg)						Conclusion
	Lead (Pb)	Cadmium (Cd)	Mercury (Hg)	Chromium VI (Cr VI)	PBBs	PBDEs	
Test Item(s)	-	-	-	-	-	-	-
27.	BL	BL	BL	Negative	NA	NA	PASS
28.	BL	BL	BL	BL	BL	BL	PASS
29.	BL	BL	BL	BL	NA	NA	PASS
30.	BL	BL	BL	Negative	NA	NA	PASS
31.	BL	BL	BL	BL	BL	BL	PASS
32.	BL	BL	BL	BL	NA	NA	PASS
33.	BL	BL	BL	BL	NA	NA	PASS
34.	BL	BL	BL	BL	BL	BL	PASS
35.	BL	BL	BL	BL	BL	BL	PASS
36.	BL	BL	BL	BL	NA	NA	PASS
37.	BL	BL	BL	BL	BL	BL	PASS
38.	BL	BL	BL	BL	NA	NA	PASS
39.	BL	BL	BL	BL	NA	NA	PASS
40.	30472 [#]	BL	BL	BL	NA	NA	EXEMPTED
41.	BL	BL	BL	BL	BL	BL	PASS
42.	31232 [#]	BL	BL	BL	NA	NA	EXEMPTED
43.	BL	BL	BL	BL	BL	BL	PASS
44.	BL	BL	BL	BL	BL	BL	PASS
45.	BL	BL	BL	BL	BL	BL	PASS
46.	BL	BL	BL	Negative	NA	NA	PASS
47.	BL	BL	BL	BL	BL	BL	PASS
48.	BL	BL	BL	BL	NA	NA	PASS
49.	BL	BL	BL	Negative	NA	NA	PASS
50.	BL	BL	BL	BL	BL	BL	PASS
51.	BL	BL	BL	Negative	NA	NA	PASS
52.	BL	BL	BL	BL	NA	NA	PASS
53.	BL	BL	BL	BL	BL	BL	PASS
54.	BL	BL	BL	BL	BL	BL	PASS
55.	BL	BL	BL	BL	BL	BL	PASS
56.	BL	BL	BL	BL	BL	BL	PASS
57.	BL	BL	BL	BL	BL	BL	PASS
58.	BL	BL	BL	BL	BL	BL	PASS
59.	BL	BL	BL	BL	BL	BL	PASS
60.	BL	BL	BL	BL	BL	BL	PASS

ULAB TESTING CO.,LTD.

Address: 3/F., Building A, No.3, Jinshagang 1st Road, Shixia, Dalang, Dongguan, Guangdong, China
 Testing Location: Room 701, Building A3, No.9, Jinshagang 1st Road, Shixia, Dalang, Dongguan, Guangdong, China
 Website: www.ulabdg.com Tel: 0769-22210225

This report is governed by, and incorporates by reference, the General Terms and Conditions of Testing which could be obtained / consulted by request to ULAB or via the webpage of Conditions of Testing in the official website: www.ulabdg.com. Attention is drawn to the limitation of liability, indemnification and jurisdiction issues defined therein. This report sets forth our findings solely respect to the client's request(s) and the test results are obtained just with the submitted sample identified herein. The test results set forth in this report are not indicative or representative of the quality or characteristics of the lot from which a test sample was taken or any similar or identical product unless specifically and expressly noted. This report shall not be partly reproduced without written approval of the laboratory. Any unauthorized alteration, forgery or falsification of the content or appearance of this report is unlawful, and any offenders may be prosecuted to the fullest extent of the law.

Test Report

Report No.: ULAB-E1-E24080062

Date Of Issue: September 30, 2024

Page:7/15

Parameter	Result(mg/kg)						Conclusion
	Lead (Pb)	Cadmium (Cd)	Mercury (Hg)	Chromium VI (Cr VI)	PBBs	PBDEs	
Test Item(s)	-	-	-	-	-	-	-
61.	BL	BL	BL	BL	NA	NA	PASS
62.	BL	BL	BL	BL	BL	BL	PASS
63.	BL	BL	BL	BL	BL	BL	PASS
64.	BL	BL	BL	BL	BL	BL	PASS
65.	BL	BL	BL	BL	BL	BL	PASS
66.	BL	BL	BL	BL	BL	BL	PASS
67.	BL	BL	BL	BL	BL	BL	PASS
68.	BL	BL	BL	BL	BL	BL	PASS
69.	BL	BL	BL	BL	BL	BL	PASS
70.	BL	BL	BL	BL	NA	NA	PASS
71.	BL	BL	BL	BL	BL	BL	PASS
72.	BL	BL	BL	BL	BL	BL	PASS
73.	BL	BL	BL	BL	BL	BL	PASS
74.	BL	BL	BL	BL	BL	BL	PASS
75.	36065 [#]	BL	BL	BL	NA	NA	EXEMPTED
76.	BL	BL	BL	BL	BL	BL	PASS
77.	BL	BL	BL	BL	NA	NA	PASS
78.	30151 [#]	BL	BL	BL	NA	NA	EXEMPTED
79.	BL	BL	BL	BL	BL	BL	PASS
80.	BL	BL	BL	BL	BL	BL	PASS
81.	BL	BL	BL	BL	BL	BL	PASS
82.	BL	BL	BL	BL	BL	BL	PASS
83.	BL	BL	BL	BL	NA	NA	PASS
84.	BL	BL	BL	BL	BL	BL	PASS
85.	BL	BL	BL	BL	NA	NA	PASS
86.	BL	BL	BL	BL	NA	NA	PASS
87.	BL	BL	BL	BL	BL	BL	PASS
88.	BL	BL	BL	BL	ND	ND	PASS

Remark:

(1) ①The test results shown as “BL” are obtained by EDXRF for primary screening (for Cr (VI), the EDXRF screening result is expressed as Cr, and for PBBs and PBDEs, the EDXRF screening results are expressed as Br), and the test results shown as exact data are obtained by further wet chemical testing by ICP-OES (for Cd, Pb, Hg), AAS (for Cd, Pb), UV-VIS (for Cr (VI)) and GC-MS (for PBBs and PBDEs).

ULAB TESTING CO.,LTD.

Address: 3/F., Building A, No.3, Jinshagang 1st Road, Shixia, Dalang, Dongguan, Guangdong, China
 Testing Location: Room 701, Building A3, No.9, Jinshagang 1st Road, Shixia, Dalang, Dongguan, Guangdong, China
 Website:www.ulabdg.com Tel:0769-22210225

This report is governed by, and incorporates by reference, the General Terms and Conditions of Testing which could be obtained / consulted by request to ULAB or via the webpage of Conditions of Testing in the official website: www.ulabdg.com. Attention is drawn to the limitation of liability, indemnification and jurisdiction issues defined therein. This report sets forth our findings solely respect to the client's request(s) and the test results are obtained just with the submitted sample identified herein. The test results set forth in this report are not indicative or representative of the quality or characteristics of the lot from which a test sample was taken or any similar or identical product unless specifically and expressly noted. This report shall not be partly reproduced without written approval of the laboratory. Any unauthorized alteration, forgery or falsification of the content or appearance of this report is unlawful, and any offenders may be prosecuted to the fullest extent of the law

Test Report

Report No.: ULAB-E1-E24080062

Date Of Issue: September 30, 2024

Page:8/15

②The EDXRF screening test for RoHS elements – The reading may be different to the actual content in the sample be of non-uniformity composition.

Unit: mg/kg

Element	Polymers	Metal	Composite material
Pb	$BL \leq (700-3\sigma) < X < (1300+3\sigma) \leq OL$	$BL \leq (700-3\sigma) < X < (1300+3\sigma) \leq OL$	$BL \leq (500-3\sigma) < X < (1500+3\sigma) \leq OL$
Cd	$BL \leq (70-3\sigma) < X < (130+3\sigma) \leq OL$	$BL \leq (70-3\sigma) < X < (130+3\sigma) \leq OL$	$LOD < X < (150+3\sigma) \leq OL$
Hg	$BL \leq (700-3\sigma) < X < (1300+3\sigma) \leq OL$	$BL \leq (700-3\sigma) < X < (1300+3\sigma) \leq OL$	$BL \leq (500-3\sigma) < X < (1500+3\sigma) \leq OL$
Cr	$BL \leq (700-3\sigma) < X$	$BL \leq (700-3\sigma) < X$	$BL \leq (500-3\sigma) < X$
Br	$BL \leq (300-3\sigma) < X$	--	$BL \leq (250-3\sigma) < X$

③OL = Over Limit, BL = Below Limit, X = Inconclusive, NA = Not Applicable.

Units and limits:

Restricted Substances	Pb	Cd	Hg	Cr (VI)	PBBs	PBDEs
Unit	mg/kg	mg/kg	mg/kg	mg/kg	mg/kg	mg/kg
limit	1000	100	1000	1000	1000	1000

(2) ①mg/kg = ppm = 0.0001%, ND = Not Detected (Less than RL).

②Unit and RL (Reporting limit) in wet chemical test.

Restricted Substances	Pb	Cd	Hg	Cr (VI)	PBBs(single)	PBDEs(single)
Unit	mg/kg	mg/kg	mg/kg	mg/kg	mg/kg	mg/kg
RL	10	10	10	10	50	50

③ According to IEC 62321-7-1:2015, result on Cr (VI) for metal sample is shown as Positive/Negative. Negative = Absence of Cr (VI) coating, Positive = Presence of Cr (VI) coating. Storage condition and production date of the tested sample are unavailable and thus results of Cr (VI) represent status of the sample at the time of testing.

(3) # = Per applicant's declaration, according to exemption list clause 6(c) Copper alloy containing up to 4% lead by weight, the tested material was exempted.

ULAB TESTING CO.,LTD.

Address: 3/F., Building A, No.3, Jinshagang 1st Road, Shixia, Dalang, Dongguan, Guangdong, China
Testing Location: Room 701, Building A3, No.9, Jinshagang 1st Road, Shixia, Dalang, Dongguan, Guangdong, China
Website: www.ulabdg.com Tel: 0769-22210225

This report is governed by, and incorporates by reference, the General Terms and Conditions of Testing which could be obtained / consulted by request to ULAB or via the webpage of Conditions of Testing in the official website: www.ulabdg.com. Attention is drawn to the limitation of liability, indemnification and jurisdiction issues defined therein. This report sets forth our findings solely respect to the client's request(s) and the test results are obtained just with the submitted sample identified herein. The test results set forth in this report are not indicative or representative of the quality or characteristics of the lot from which a test sample was taken or any similar or identical product unless specifically and expressly noted. This report shall not be partly reproduced without written approval of the laboratory. Any unauthorized alteration, forgery or falsification of the content or appearance of this report is unlawful, and any offenders may be prosecuted to the fullest extent of the law.

Test Report

Report No.: ULAB-E1-E24080062

Date Of Issue: September 30, 2024

Page:9/15

Phthalates Content - European Council Directive 2011/65/EU on the Restriction of the Use of Certain Hazardous Substances in Electrical and Electronic Equipment (RoHS) with its Amendments Commission Delegated Directive (EU) 2015/863

Test Method: IEC 62321-8:2017, Analyzed by Gas Chromatography and Mass Spectrometry (GC-MS).

Analytes	Result (mg/kg)		Requirement (mg/kg)
	1+18+20	2+3+4+7+10+12	
Dibutyl phthalate (DBP)	ND	ND	1000
Di-(2-ethyl hexyl) phthalate (DEHP)	ND	ND	1000
Benzyl butyl phthalate (BBP)	ND	ND	1000
Di-(iso-butyl) phthalate (DIBP)	ND	ND	1000
Conclusion	PASS	PASS	-

Analytes	Result (mg/kg)			Requirement (mg/kg)
	13+15+25+28+31+34	44+50	35+41+43	
Dibutyl phthalate (DBP)	ND	ND	ND	1000
Di-(2-ethyl hexyl) phthalate (DEHP)	ND	ND	ND	1000
Benzyl butyl phthalate (BBP)	ND	ND	ND	1000
Di-(iso-butyl) phthalate (DIBP)	ND	ND	ND	1000
Conclusion	PASS	PASS	PASS	-

Analytes	Result (mg/kg)		Requirement (mg/kg)
	45+47+53+54+55	69+71	
Dibutyl phthalate (DBP)	ND	ND	1000
Di-(2-ethyl hexyl) phthalate (DEHP)	ND	ND	1000
Benzyl butyl phthalate (BBP)	ND	ND	1000
Di-(iso-butyl) phthalate (DIBP)	ND	ND	1000
Conclusion	PASS	PASS	-

ULAB TESTING CO.,LTD.

Address: 3/F., Building A, No.3, Jinshagang 1st Road, Shixia, Dalang, Dongguan, Guangdong, China
 Testing Location: Room 701, Building A3, No.9, Jinshagang 1st Road, Shixia, Dalang, Dongguan, Guangdong, China
 Website: www.ulabdg.com Tel: 0769-22210225

This report is governed by, and incorporates by reference, the General Terms and Conditions of Testing which could be obtained / consulted by request to ULAB or via the webpage of Conditions of Testing in the official website: www.ulabdg.com. Attention is drawn to the limitation of liability, indemnification and jurisdiction issues defined therein. This report sets forth our findings solely respect to the client's request(s) and the test results are obtained just with the submitted sample identified herein. The test results set forth in this report are not indicative or representative of the quality or characteristics of the lot from which a test sample was taken or any similar or identical product unless specifically and expressly noted. This report shall not be partly reproduced without written approval of the laboratory. Any unauthorized alteration, forgery or falsification of the content or appearance of this report is unlawful, and any offenders may be prosecuted to the fullest extent of the law.

Test Report

Report No.: ULAB-E1-E24080062

Date Of Issue: September 30, 2024

Page:10/15

Analytes	Result (mg/kg)			Requirement (mg/kg)
	72+74+82	73+76+79+80+81	84+87+88	
Dibutyl phthalate (DBP)	ND	ND	ND	1000
Di-(2-ethyl hexyl) phthalate (DEHP)	ND	ND	ND	1000
Benzyl butyl phthalate (BBP)	ND	ND	ND	1000
Di-(iso-butyl) phthalate (DIBP)	ND	ND	ND	1000
Conclusion	PASS	PASS	PASS	-

Note / Key:

ND = Not detected

mg/kg = milligram(s) per kilogram = ppm = part(s) per million

MDL= Method Detection Limit = 50mg/kg.

The composite test sample(s) of the submitted samples was prepared in the manner requested by the client, when subject to the test performed

ULAB TESTING CO.,LTD.

Address: 3/F., Building A, No.3, Jinshagang 1st Road, Shixia, Dalang, Dongguan, Guangdong, China
Testing Location: Room 701, Building A3, No.9, Jinshagang 1st Road, Shixia, Dalang, Dongguan, Guangdong, China
Website:www.ulabdg.com Tel:0769-22210225

This report is governed by, and incorporates by reference, the General Terms and Conditions of Testing which could be obtained / consulted by request to ULAB or via the webpage of Conditions of Testing in the official website: www.ulabdg.com. Attention is drawn to the limitation of liability, indemnification and jurisdiction issues defined therein. This report sets forth our findings solely respect to the client's request(s) and the test results are obtained just with the submitted sample identified herein. The test results set forth in this report are not indicative or representative of the quality or characteristics of the lot from which a test sample was taken or any similar or identical product unless specifically and expressly noted. This report shall not be partly reproduced without written approval of the laboratory. Any unauthorized alteration, forgery or falsification of the content or appearance of this report is unlawful, and any offenders may be prosecuted to the fullest extent of the law

Test Report

Report No.: ULAB-E1-E24080062

Date Of Issue: September 30, 2024

Page:11/15

Photo of the Submitted Sample



ULAB-E1-E24080062



ULAB-E1-E24080062



ULAB-E1-E24080062

ULAB TESTING CO.,LTD.

Address: 3/F., Building A, No.3, Jinshagang 1st Road, Shixia, Dalang, Dongguan, Guangdong, China
Testing Location: Room 701, Building A3, No.9, Jinshagang 1st Road, Shixia, Dalang, Dongguan, Guangdong, China
Website:www.ulabdg.com Tel:0769-22210225

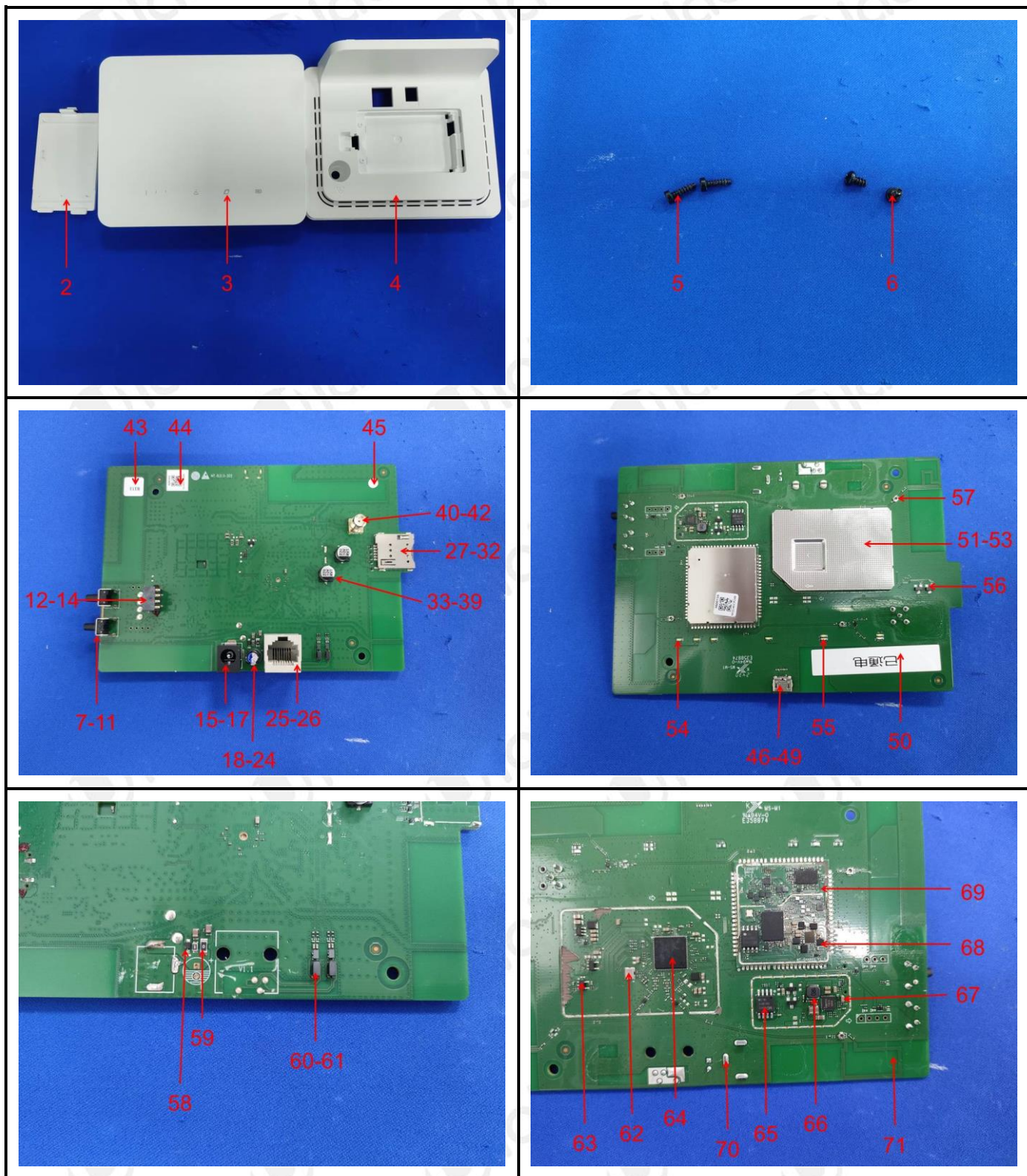
This report is governed by, and incorporates by reference, the General Terms and Conditions of Testing which could be obtained / consulted by request to ULAB or via the webpage of Conditions of Testing in the official website: www.ulabdg.com. Attention is drawn to the limitation of liability, indemnification and jurisdiction issues defined therein. This report sets forth our findings solely respect to the client's request(s) and the test results are obtained just with the submitted sample identified herein. The test results set forth in this report are not indicative or representative of the quality or characteristics of the lot from which a test sample was taken or any similar or identical product unless specifically and expressly noted. This report shall not be partly reproduced without written approval of the laboratory. Any unauthorized alteration, forgery or falsification of the content or appearance of this report is unlawful, and any offenders may be prosecuted to the fullest extent of the law

Test Report

Report No.: ULAB-E1-E24080062

Date Of Issue: September 30, 2024

Page:12/15



ULAB TESTING CO.,LTD.

Address: 3/F., Building A, No.3, Jinshagang 1st Road, Shixia, Dalang, Dongguan, Guangdong, China
Testing Location: Room 701, Building A3, No.9, Jinshagang 1st Road, Shixia, Dalang, Dongguan, Guangdong, China
Website: www.ulabdg.com Tel: 0769-22210225

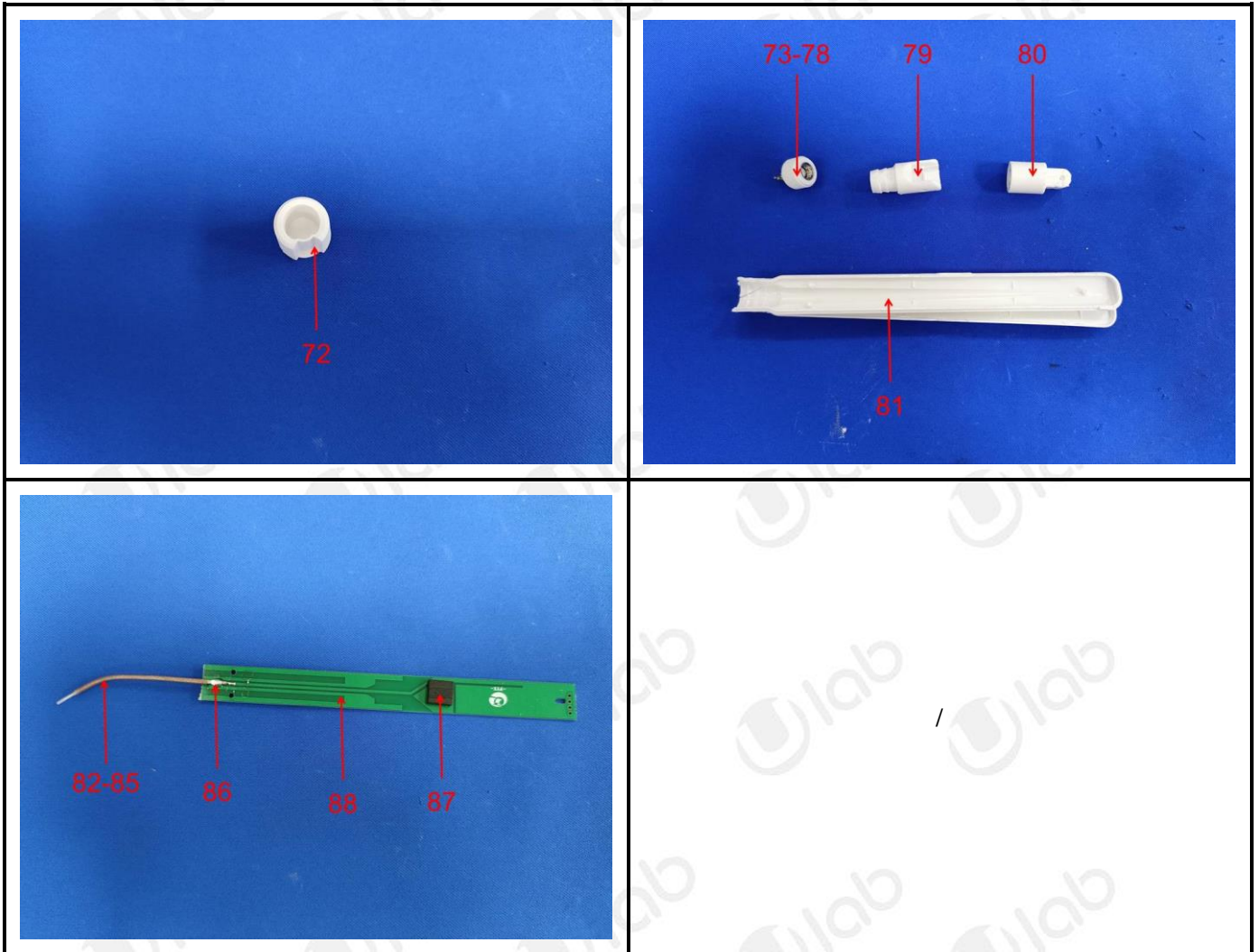
This report is governed by, and incorporates by reference, the General Terms and Conditions of Testing which could be obtained / consulted by request to ULAB or via the webpage of Conditions of Testing in the official website: www.ulabdg.com. Attention is drawn to the limitation of liability, indemnification and jurisdiction issues defined therein. This report sets forth our findings solely respect to the client's request(s) and the test results are obtained just with the submitted sample identified herein. The test results set forth in this report are not indicative or representative of the quality or characteristics of the lot from which a test sample was taken or any similar or identical product unless specifically and expressly noted. This report shall not be partly reproduced without written approval of the laboratory. Any unauthorized alteration, forgery or falsification of the content or appearance of this report is unlawful, and any offenders may be prosecuted to the fullest extent of the law

Test Report

Report No.: ULAB-E1-E24080062

Date Of Issue: September 30, 2024

Page:13/15



ULAB TESTING CO.,LTD.

Address: 3/F., Building A, No.3, Jinshagang 1st Road, Shixia, Dalang, Dongguan, Guangdong, China
 Testing Location: Room 701, Building A3, No.9, Jinshagang 1st Road, Shixia, Dalang, Dongguan, Guangdong, China
 Website: www.ulabdg.com Tel: 0769-22210225

This report is governed by, and incorporates by reference, the General Terms and Conditions of Testing which could be obtained / consulted by request to ULAB or via the webpage of Conditions of Testing in the official website: www.ulabdg.com. Attention is drawn to the limitation of liability, indemnification and jurisdiction issues defined therein. This report sets forth our findings solely respect to the client's request(s) and the test results are obtained just with the submitted sample identified herein. The test results set forth in this report are not indicative or representative of the quality or characteristics of the lot from which a test sample was taken or any similar or identical product unless specifically and expressly noted. This report shall not be partly reproduced without written approval of the laboratory. Any unauthorized alteration, forgery or falsification of the content or appearance of this report is unlawful, and any offenders may be prosecuted to the fullest extent of the law

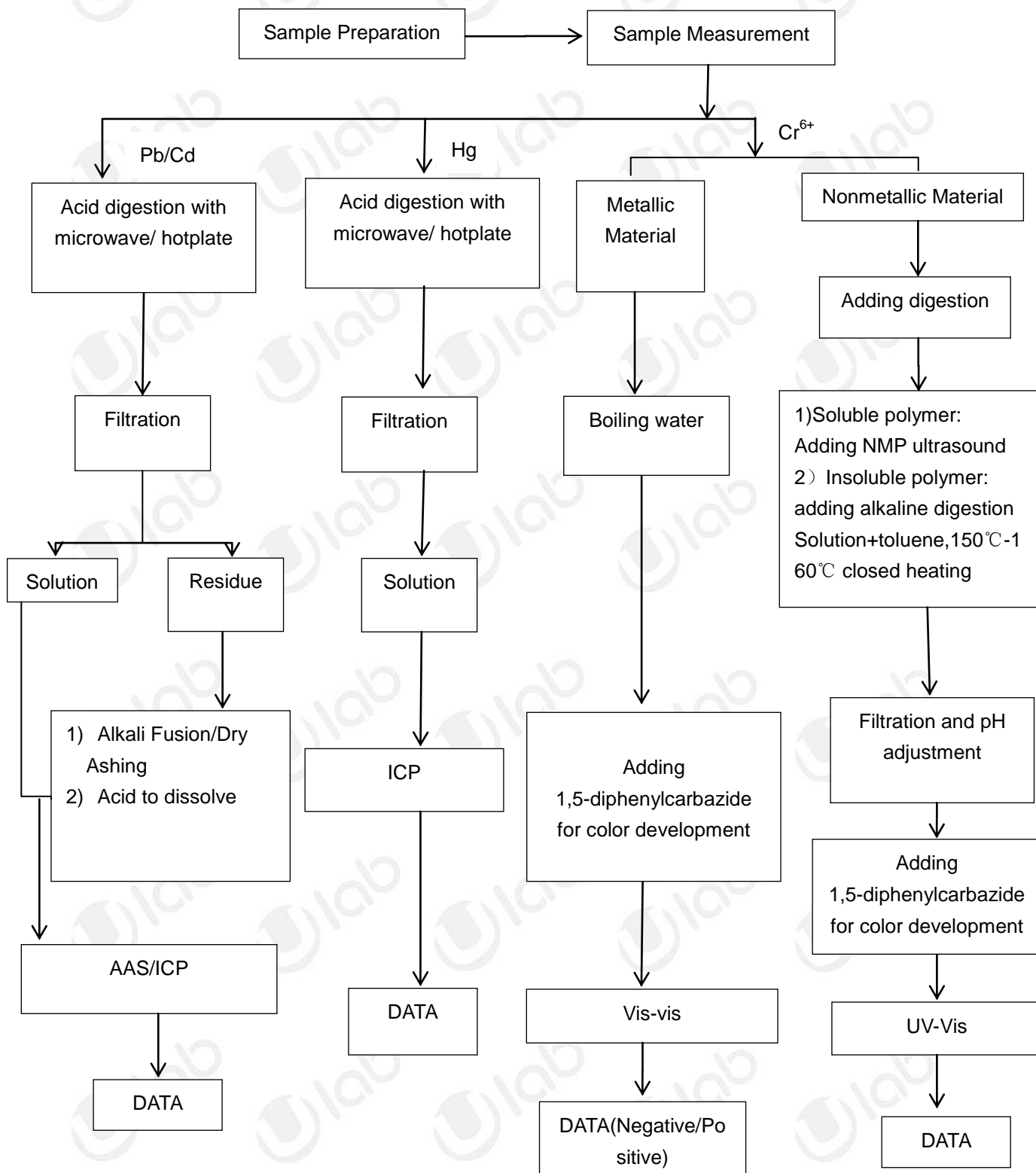
Test Report

Report No.: ULAB-E1-E24080062

Date Of Issue: September 30, 2024

Page:14/15

Pb/Cd/Hg/Cr⁶⁺ Testing Flow Chart



ULAB TESTING CO.,LTD.

Address: 3/F., Building A, No.3, Jinshagang 1st Road, Shixia, Dalang, Dongguan, Guangdong, China
 Testing Location: Room 701, Building A3, No.9, Jinshagang 1st Road, Shixia, Dalang, Dongguan, Guangdong, China
 Website:www.ulabdg.com Tel:0769-22210225

This report is governed by, and incorporates by reference, the General Terms and Conditions of Testing which could be obtained / consulted by request to ULAB or via the webpage of Conditions of Testing in the official website: www.ulabdg.com. Attention is drawn to the limitation of liability, indemnification and jurisdiction issues defined therein. This report sets forth our findings solely respect to the client's request(s) and the test results are obtained just with the submitted sample identified herein. The test results set forth in this report are not indicative or representative of the quality or characteristics of the lot from which a test sample was taken or any similar or identical product unless specifically and expressly noted. This report shall not be partly reproduced without written approval of the laboratory. Any unauthorized alteration, forgery or falsification of the content or appearance of this report is unlawful, and any offenders may be prosecuted to the fullest extent of the law

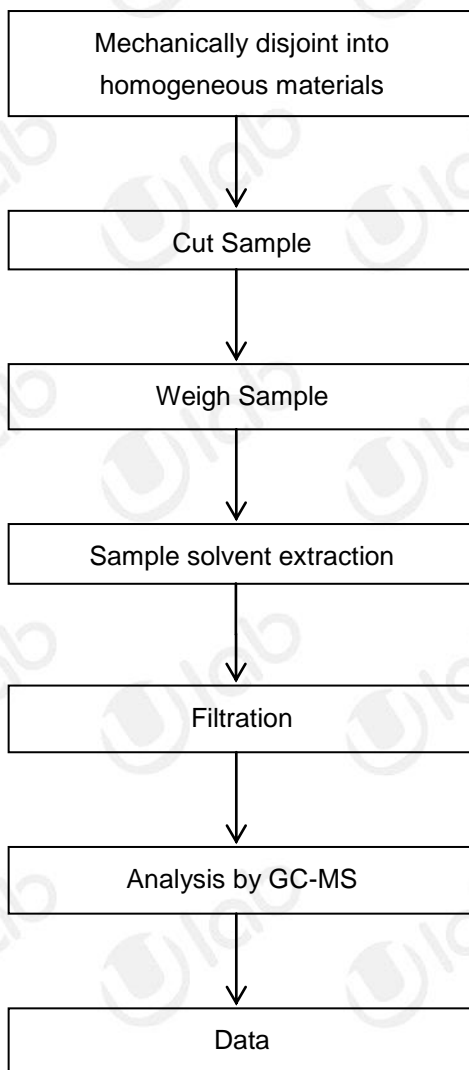
Test Report

Report No.: ULAB-E1-E24080062

Date Of Issue: September 30, 2024

Page:15/15

PBBs/PBDEs Testing Flow Chart or Phthalates Testing Flow Chart



*** End of Report ***

ULAB TESTING CO.,LTD.

Address: 3/F., Building A, No.3, Jinshagang 1st Road, Shixia, Dalang, Dongguan, Guangdong, China
Testing Location: Room 701, Building A3, No.9, Jinshagang 1st Road, Shixia, Dalang, Dongguan, Guangdong, China
Website: www.ulabdg.com Tel: 0769-22210225

This report is governed by, and incorporates by reference, the General Terms and Conditions of Testing which could be obtained / consulted by request to ULAB or via the webpage of Conditions of Testing in the official website: www.ulabdg.com. Attention is drawn to the limitation of liability, indemnification and jurisdiction issues defined therein. This report sets forth our findings solely respect to the client's request(s) and the test results are obtained just with the submitted sample identified herein. The test results set forth in this report are not indicative or representative of the quality or characteristics of the lot from which a test sample was taken or any similar or identical product unless specifically and expressly noted. This report shall not be partly reproduced without written approval of the laboratory. Any unauthorized alteration, forgery or falsification of the content or appearance of this report is unlawful, and any offenders may be prosecuted to the fullest extent of the law.